

FINGER TOUCH PORTABLE INTERACTIVE WHITEBOARD

FP BOARD MANUAL

V 2.0

Contents

Introduction.....	1
Specification Data and Package.....	2
Working Environment.....	2
Hardware Installation	3
Calibration Software	6
tBoard Software Manual.....	9
Tips.....	14

Introduction

Interactive Whiteboard FP Board is the first portable Interactive Whiteboard that supports finger touch. It can work with any projectors or LCD screen and turn the projection screen or LCD Screen into finger touchable. Key features: portable and finger touch; detect any non-transparent objects; Work on any surfaces, no limited on the material; active sizes range from 40"-85"; can work with common board and save the record of both mark pen and finger writing.



* 6 months replacement, 2 years limited warranty for the FP Board model.

Features

- 1, Support finger touch.
- 2, Multi-writing.
- 3, Remote control with our new pen (Option).
- 4, Support to delete the words with the normal eraser.
- 5, Portable and easy to install.
- 6, Turn normal whiteboard or wall into finger touchable.
- 7, Any non-transparent objects like a rolled paper.

Specifications

calibration	Automatic Calibration/Manual Calibration
object detection	finger(stylus) or eraser
delay	<80 ms
minimum active work area	40" diagonal
maximum active work area	85" diagonal
tracking technology	Laser Image Calibration Technology (LICT)

positional accuracy	± 1 Pixel (Resolution: 1024 x 768)
average power	
consumption	700mW
dimensions	Bar: L 70cm, Base: L 14cm x W 12.5cm x D 4.5cm
power requirements	110-240V, 50/60HZ, 2A
weight	0.65kgs
requirements	Windows XP, Vista, Windows 7
software	Calibration software and Application Software
certification	CE, FCC

Package Includes



Finger Touch Model



7m USB Cable



Power Adaptor



Pointer



CDs



HardKey



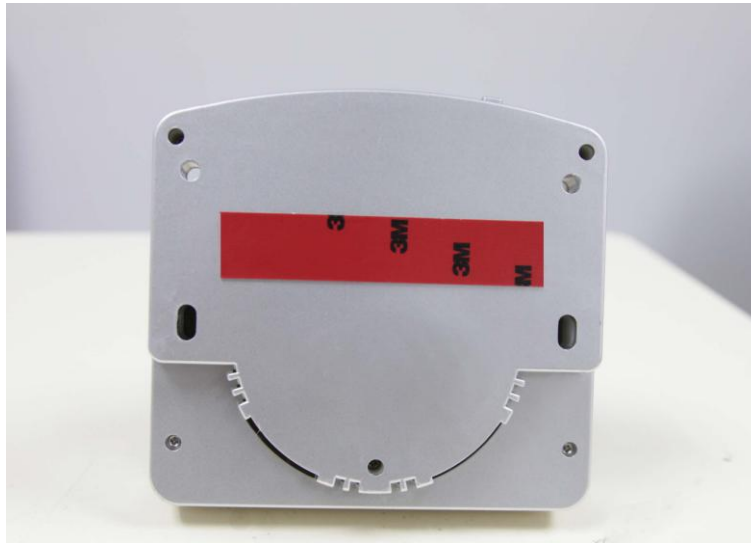
GL-IRP(Optional)

Working Environment

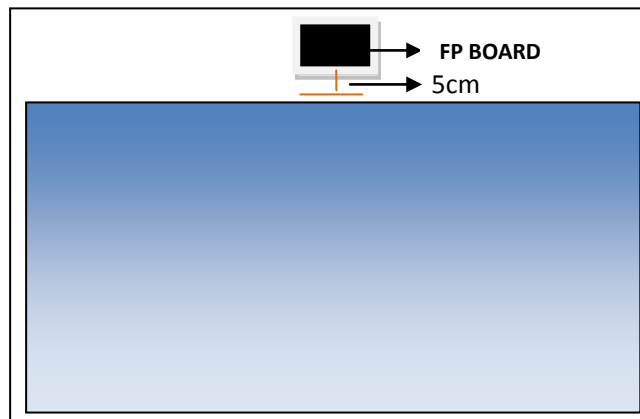
Computer	CPU: P4 2.8 or Above	RAM: 1G
	Hard disk: 20G	
	System: XP / Vista/ Win7	

Hardware Installation

1, There is a red tape on the base of FP Board as below. Please keep it and don't peel off the red sheet.



2, Prepare a flat whiteboard: Please leave a space between the projection screen and whiteboard edge as marked as below.



3, If you choose to install with screws, please according to the following steps:

Take the cover of FP Board Base(Pic1). Put 4 screws and mount FP Board on the area marked in black area in the above picture. The base of FP Board should be at the same level with the surface of whiteboard. Set the bar perpendicular to the board. Tighten the upper screws and then the down screws (Pic2). The base of FP Board should be touched on the board with a little space **(Later we will adjust the angle of FP Board through fastening or loosening the screws.)**



(Pic1)



(Pic2)

If you choose to install with the double faced adhesive tape, please according to the following steps:

Put another two strip of double faced adhesive tapes onto the FP Board's base (like Pic3), tearing the red layer, and put the FP Board onto the board or wall. You'd better to use your hands to press the FP Board to the flat surface about 20 seconds to make sure it can be sticky strongly.

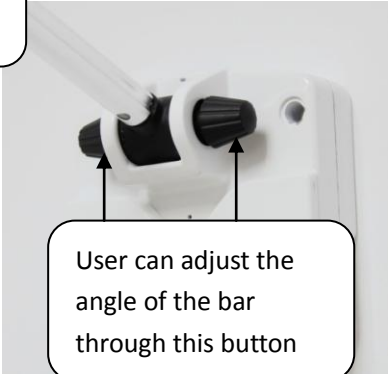
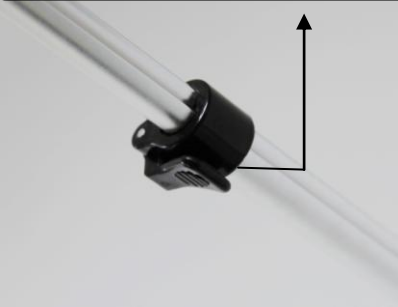


(Pic3)

4, Connect one end of USB Cable to the USB Port of Computer, and the other end to FP Board. Plug the power cable into FP Board. USB and Power cable should be exclusive to the projection screen. Plug the hardkey into the USB Port of computer.



User can extend the bar according to the size of projection screen after releasing this button.



User can adjust the angle of the bar through this button



User can adjust the angle of the sensor after releasing this

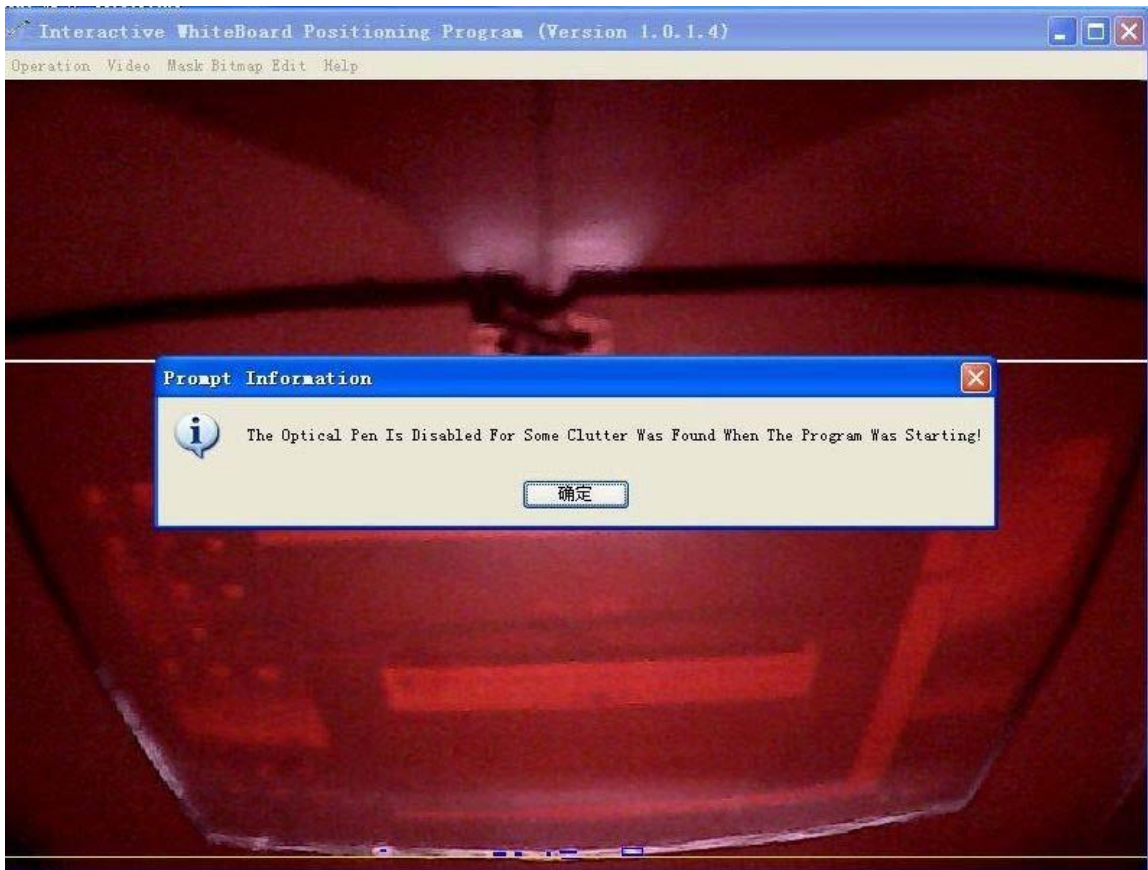
Calibration Software

Open the small CD and copy the “Calibration Software” and “Application Software” file folders into your PC.

Calibration

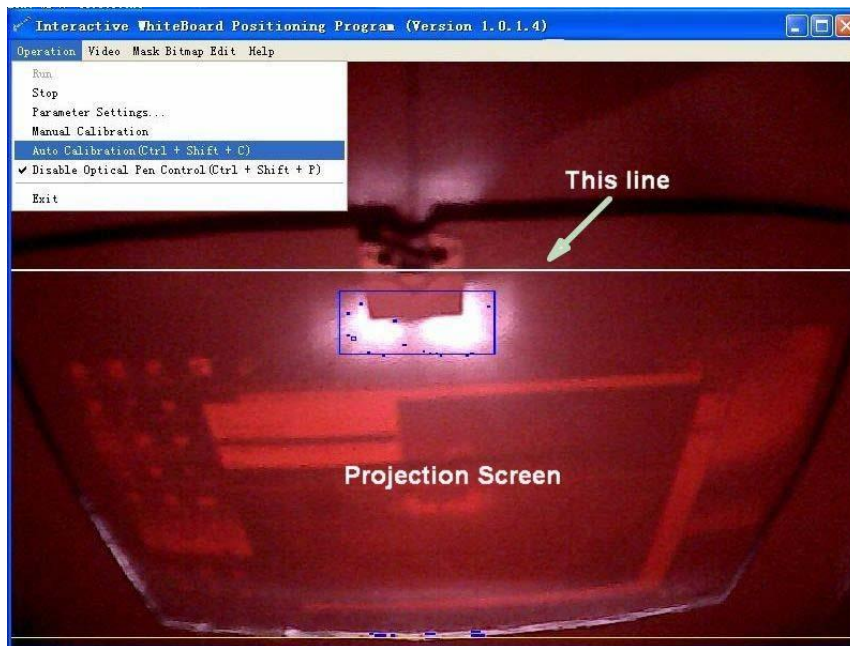
1, Open the file of CALIBRATION SOFTWARE, run “Whiteboard Calibration”;

You can get a screen from sensor like **below**:

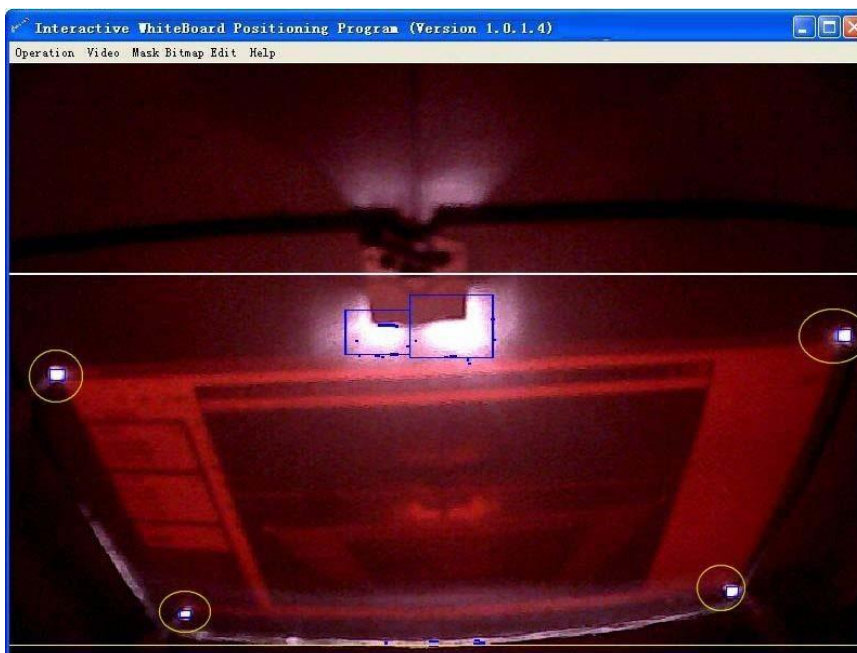


2, Change the angle of the sensor until the image is located under the line.

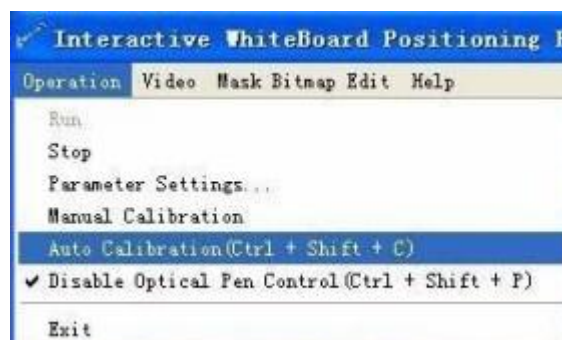




Then touch each corner and check if it can be seen from the calibration screen like below. If some corner is not included, please extend the bar or minimize the projection screen. **Each corner must be involved.**



3, Please choose "Automatic Calibration" from the menu or you can press **Ctrl+Shift+C** to do calibration.



4, After you have finished the calibration, you can use the finger or the pen as a mouse on the projection screen.

5, The calibration software will be minimized at the right corner. Put the mouse on the icon and right click. You can make FP BOARD run with the computer starting.



tBoard Software

Step 1: When the operation system is **Windows XP or Vista**, please place the big software CD-ROM into the CD drive and copy the

“dotNetFX35” folder in the CD-ROM onto your PC’s hard disk drive. **(Please skip this step with Windows 7)**

Please Note: do not RUN the software from the CD directly.

Step 2: Open the “dotNetFX35” and then run



Step3: Open the folder “Application Software” and run



, There will be a icon of tBoard on the desktop.



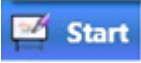
Now the Application software of “tBoard” is installed.

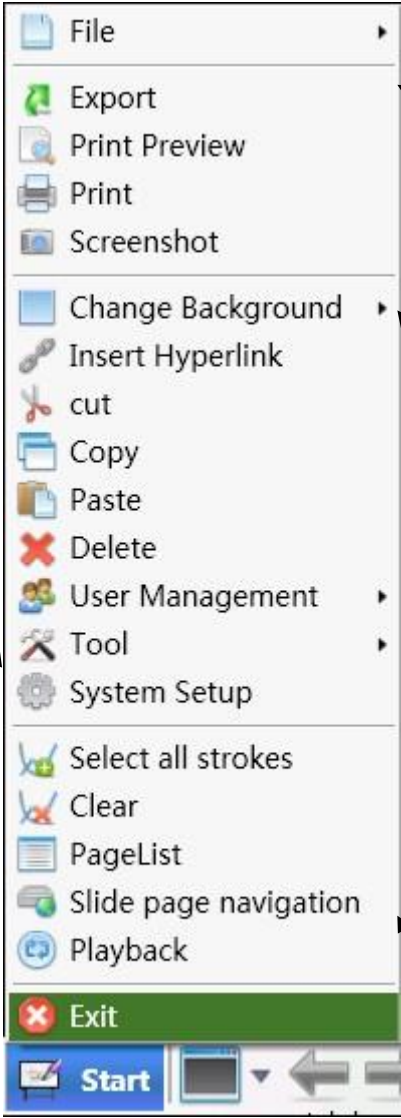
Step4: Open the “Application software” and install “Handwriting Recognition”.



Double click the icon of tBoard from the desktop to use it.

Start Menu Introduction

Click the menu , then the tool list will pop up, click the option according to the different needs.



The File menu: including the “New, Open, Save, Save As” Support open “ PTS, PDF, Word, Excel, PowerPoint and other file formats.

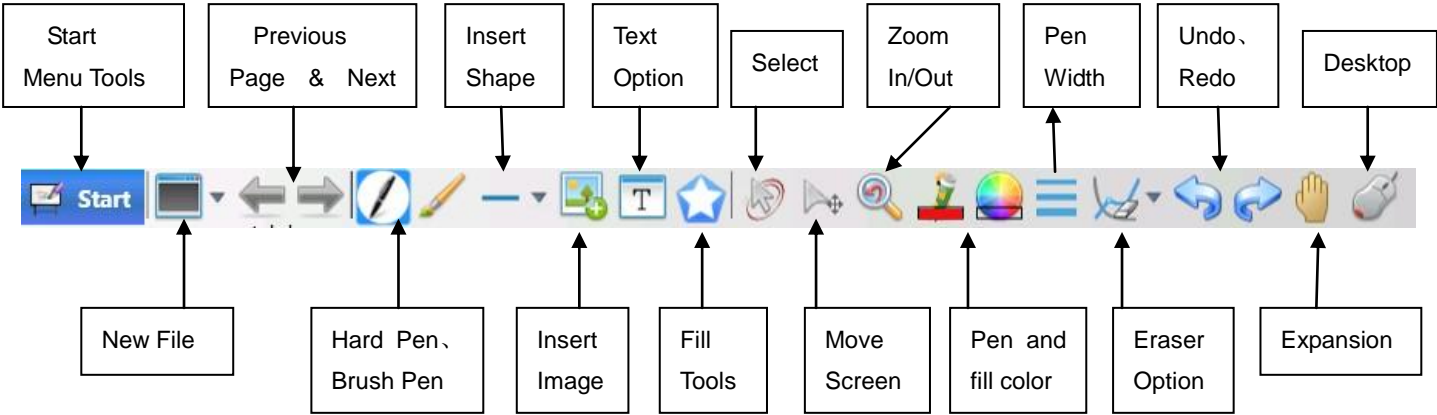
Export: the current page could be exported as the format of PNG, JPG, BMP, ISF and XPS.

Change Background: used to change the background of current page.

Slide page navigation: users will be required to open the slide and enter the “View Show” status under the desktop status, click on the function keys then the Annotation, page up and down could be achieved.

Tool Group Includes: Protractor, Triangle, Ruler, Timer, Media Player, Vide Capture, Mask, Magnifying glass, Spotlight, Keyboard, Calculator, Handwriting Recognition, Screen Recording, External tool Management.

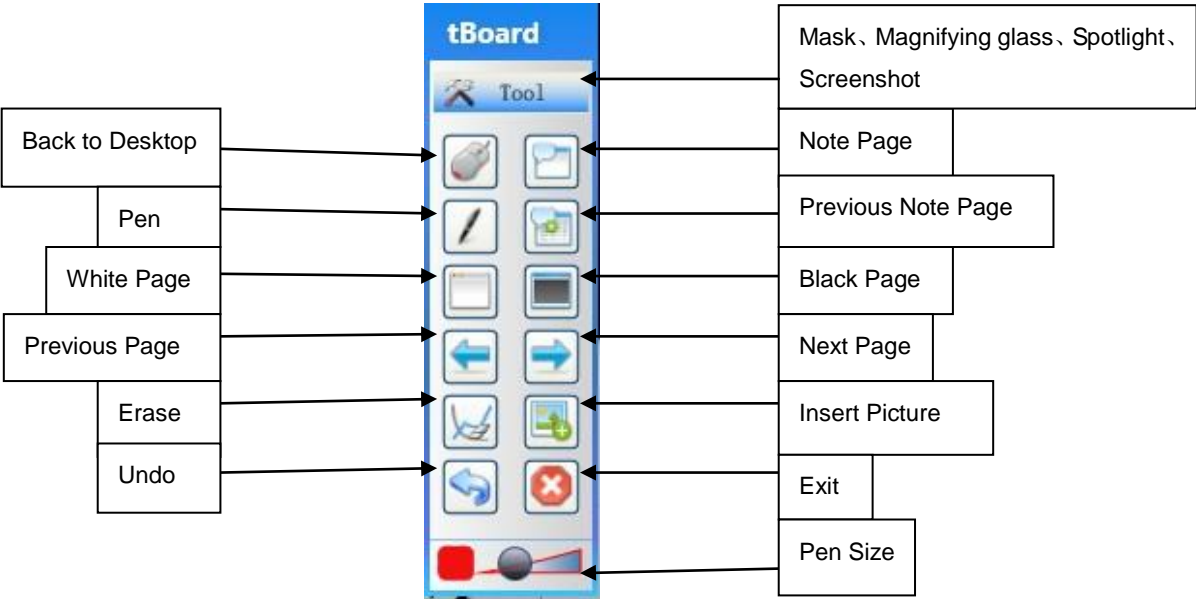
Insert Hyperlink: including the “ Web Page, Disk File and Documentation Page”



Minimize the Toolbar Introduction



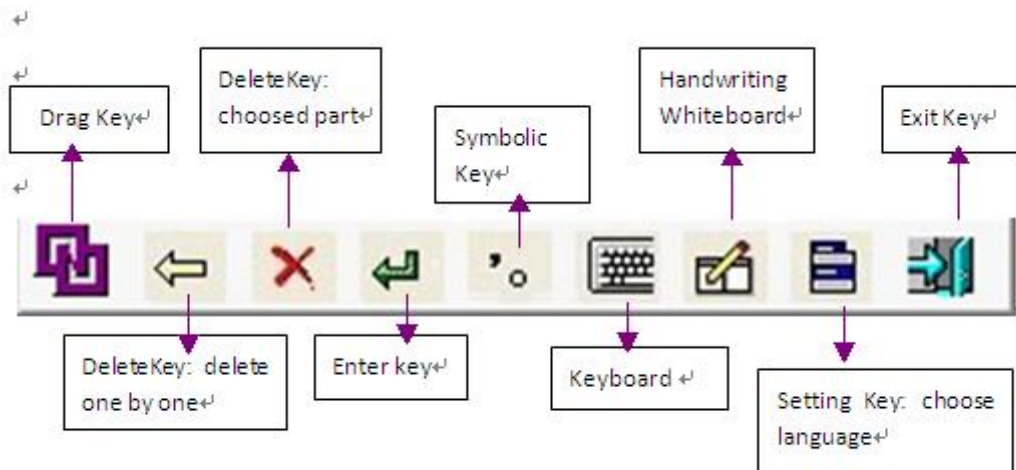
Click to switch to the desktop Mode, then the right side of the desktop will appear Minimize toolbar, the following is a description of each button:



Handwriting Recognition

Step 1: Start the handwriting Recognition from "Tool" list of tBoard.

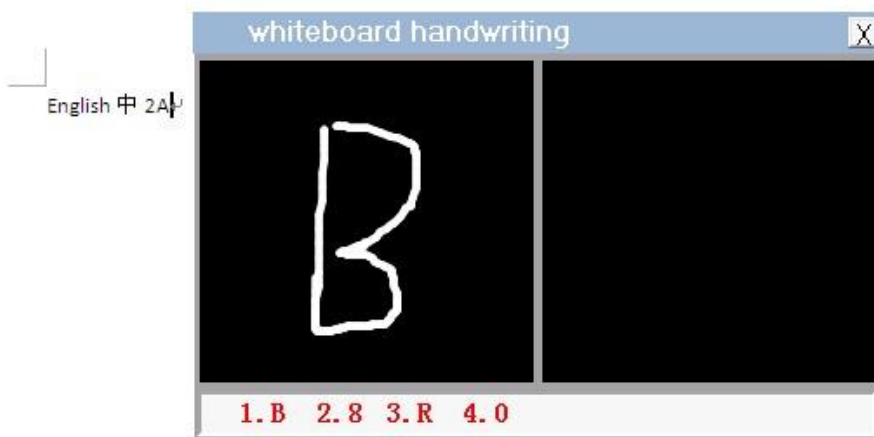
It will appear toolbar.



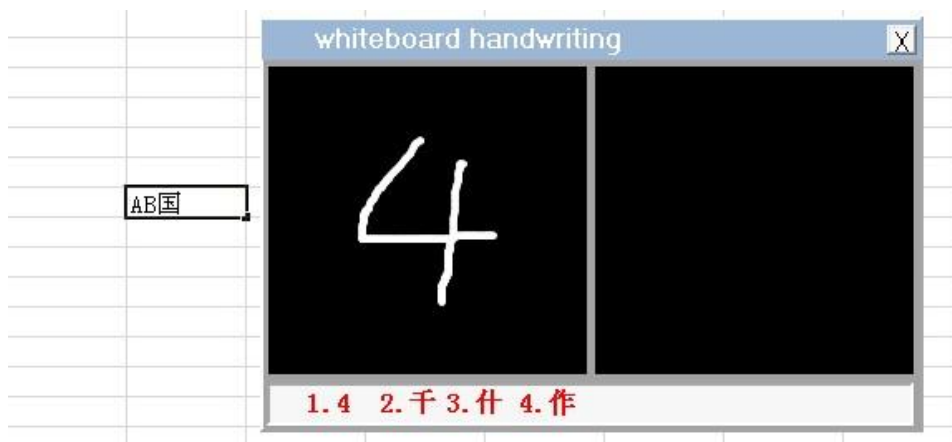
Step 2: Using the Handwriting Recognition in Word file, Excel file and tBoard.

In Word and Excel file

Open the Word and Excel file from computer procedure and you will use it as like the Picture 1 and 2.




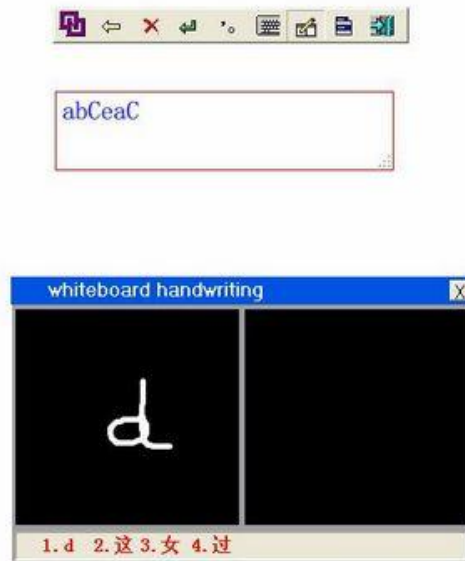
Picture 1



Picture 2

In tBoard

Click  in the tBoard and make a text input window like picture 3



Picture 3

Virtual Keyboard

Step 1: Open the "Handwriting Recognition", then click the virtual keyboard in the toolbar.



Step 2: The soft keyboard could be used in the Word file, Excel file and IE, etc

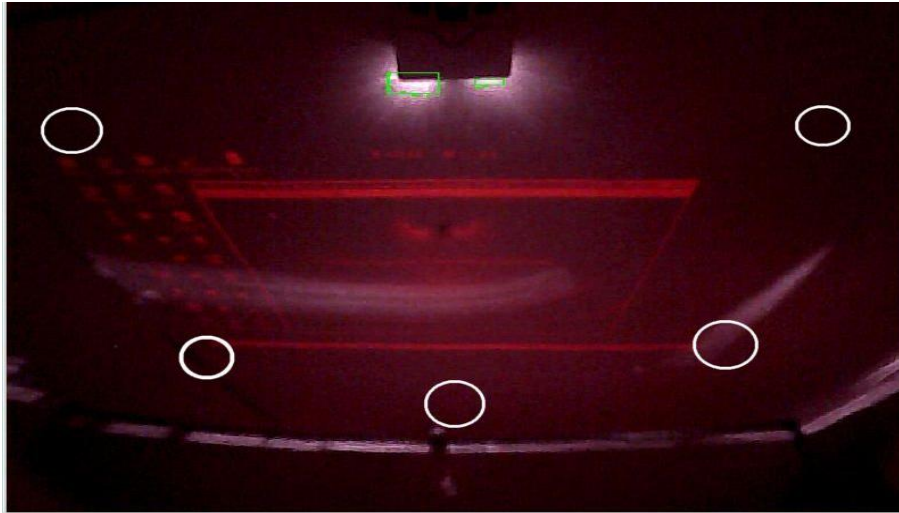
Multi-touch

Before starting multi-touch, please find the folder "Calibration Software" and run



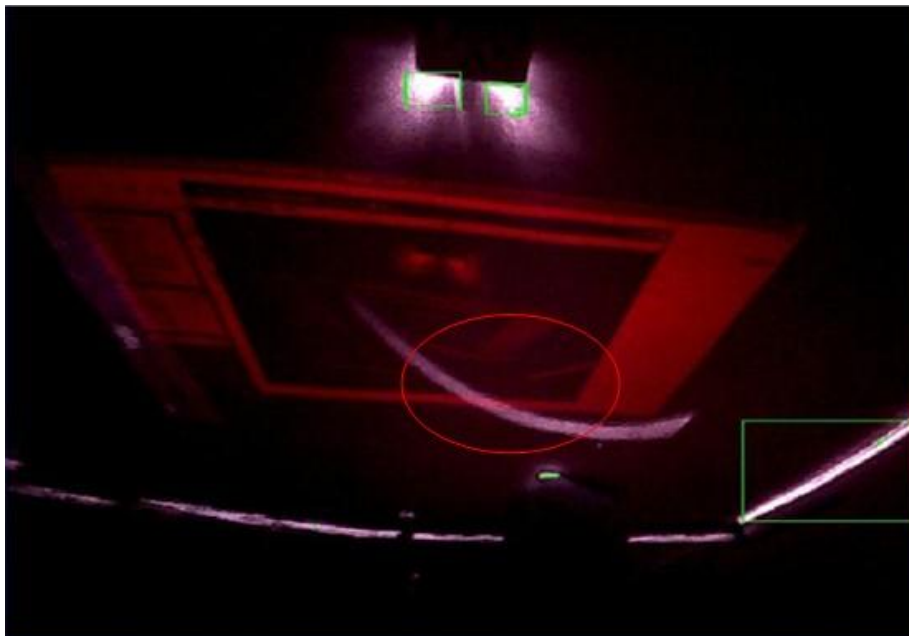
TIPS

1, Please try to click 5 points of screen (Pic10). Move one finger from far to close. If the finger is detected at 5mm or above before touching the board. Please tighten No 3 and No 4 screws and loosen No 1 and No 2 screws. (For double faced adhesive tapes, please insert the cards from the top of the base. Before adjusting the screws, please open the calibration screen first and check the result. Keep doing this until the finger can only be detected at 2-4mm away from the whiteboard surface.



(Pic10)

2, You may see some white line marked in red circle (Pic6). It will make calibration failed.

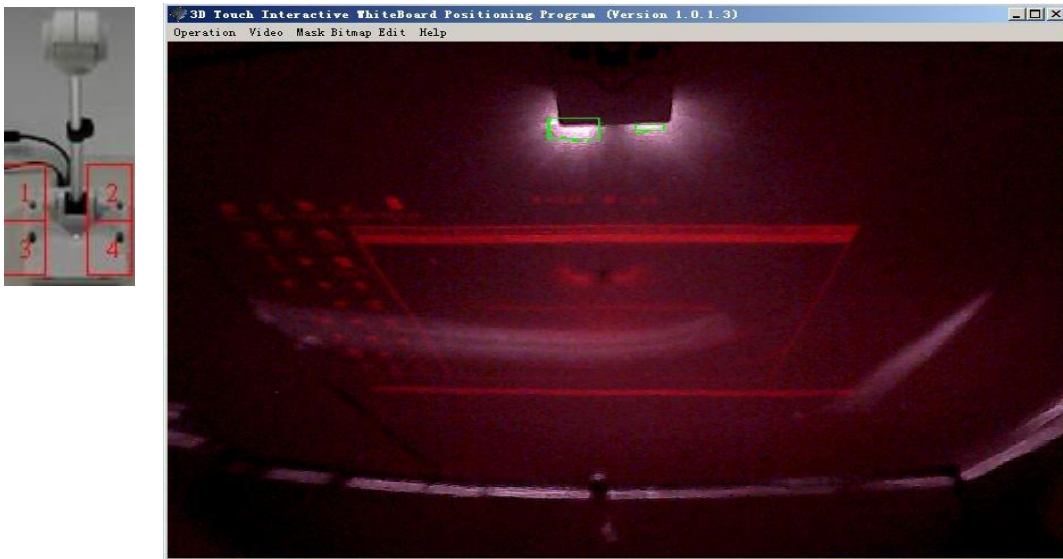


(Pic6)

If you use the screws for installation, this problem can be solved by tightening No 1 screw and loosen No 4 screw (Pic7). (White line is located at left of screen, please tighten No 2 screw and loosen No 3 screw

White lines are located at left and right screen, please loosen No 3, 4 screws and tighten No1, 2 screws)

Please keep trying until the white line gone.



(Pic7)

If you use the double faced adhesive tapes for the installation, this problem can be solved by use some cards (for example: name cards) to insert between the flat surface and base of the FP Board.



(Pic 9)

(White line is located at the left of the screen, please inserts the cards to the left side of the base; White lines are located at the left and right screen, please inserts the cards from the bottom of the base (like Pic9)

3, The maxim distance from finger touch bar end to the screen is about 55CM, the computer image taken by the sensor must be all included in the projection screen (the red video), people need adjust the sensitivity setting and installation place according to different environments, Please make sure there are no obvious bright spot (or green light) in the red video of the calibration software;

4, Q: Why the calibration screen looks dark after we finish the calibration?

A: The brightness of calibration screen can be adjusted by the Gamma value.

In order to get a bright screen, you can put the gamma value at 40. For dark green, you can set it at 100.

You can find this setting from the calibration software, "Operation"---"Parameter Settings---"Gamma Value".

In order to decrease the interruption from ambient lights, our software will set the Gamma Value at 100 automatically after the calibration.

5, Please touch in the center of the cross;

6, To the sensitivity setting, Generally speaking it is from 2 to 5, it may cause the mouse out control if the sensitivity is too high (8), or it may led writing is unable or broken if the sensitivity is too low, (such as 1 or 0);

7, To the function of right click of mouse, please press button for about 2 seconds. The target will become moving if jitter and it also won't pop up the context menu if the time is too short;

8, If it reported the software error when inserting the USB dongle, Please make sure the red light of the USB dongle keeps flashing, or you can re-insert or other USB point ;

9, If there are time delay of green light In the red video of the calibration software , please check the frame rate(open calibration software-press video) if less than 50, please change the computer to try or contact technicians;

10, Make sure the power of the fingers touch, please insert USB cable into the point of the computer chassis or please plug in the power if it is a laptop

11, Q: After calibration, the mouse can be move but cannot do single or double click.

A: Check if there is Antivirus software in your computer, maybe the software prohibits the functions of mouse. Then just close the Antivirus software.

12, Q: calibration screen is too dark to be clear.

A: Please open "Operation"-----"Parameter Settings", put the Gamma value at a lower value---40. Please get it back to 75 or 100 after the calibration.

